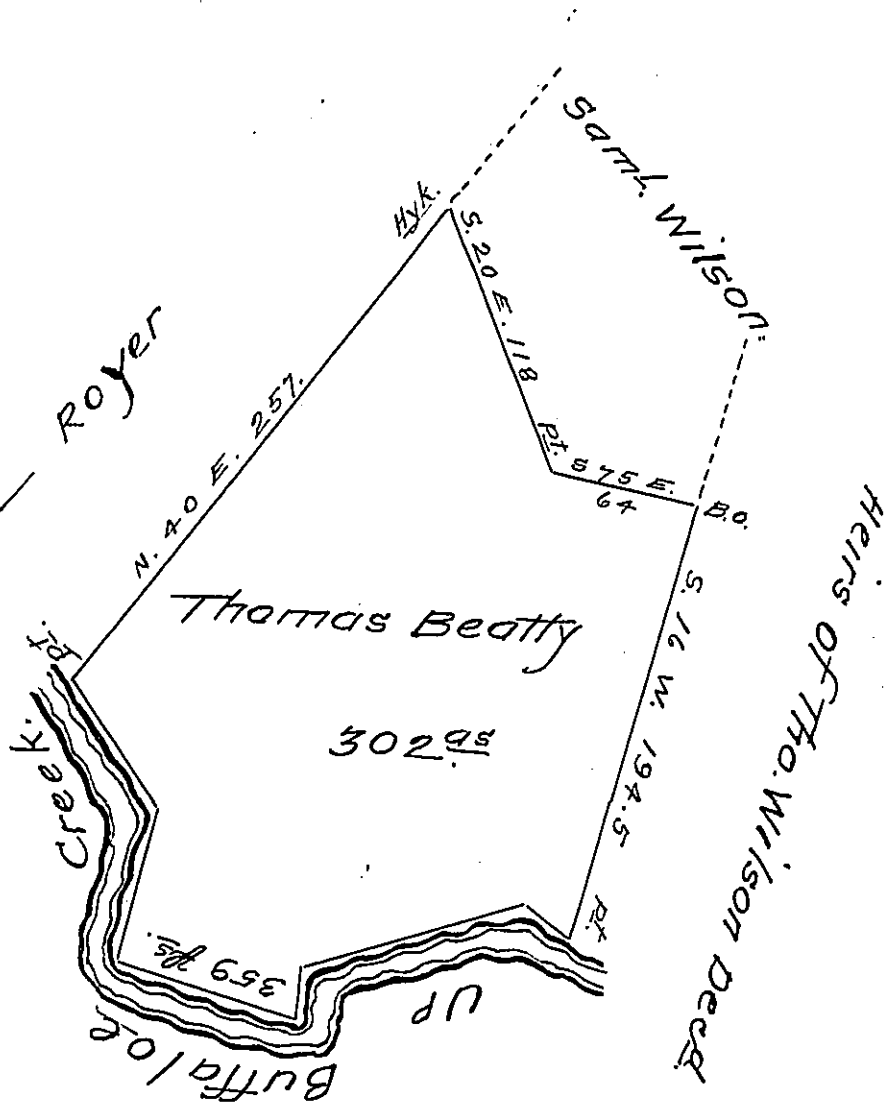


Courses & Dist up
Buffaloe Creek.

N.	49	W.	25.
S.	76	W.	100.
S.	6	W.	20.
S.	71	W.	83.
N.	16	E.	65.
N.	32	W.	66. Pt
			<u>359 fts</u>



SITUATE in Kelly township Union (late Berks) county
Surveyed the 6th. day of May 1832 by virtue of an Order
granted to Thomas Beatty dated the 3^d. day of April
1769 No 2368 Containing three hundred and two a-
cres with the usual allowance &c.

Note - The same tract of land was surveyed the
12th. day of August 1769 for Richard Edwards in pur-
suance of his order dated the 3^d. day of April 1769 -
No 714 And now owned & occupied by Roan McClure
in right of the said Richard Edwards.

To Jacob Spangler Esq.
Surveyor General Penn.

Pr. Jm^o. Hayes Con.

The following office rights are for the same land as above,

- VIZ. Appl. No. 2060, to Henry Harper.
 - - 2340 to Robert Taggart.
 - - 1858 to Henry Shaffner.
 - - 1606 to John Mease.
 - - 2988 to James English.

IN TESTIMONY that the above is a copy of the original remaining on file in
the Department of Internal Affairs of Pennsylvania, made
conformably to an Act of Assembly approved the 16th day of
February, 1833, I have hereunto set my Hand and caused
the Seal of said Department to be affixed at Harrisburg,
this twenty sixth day of August 1908.

Henry Houch
Secretary of Internal Affairs.